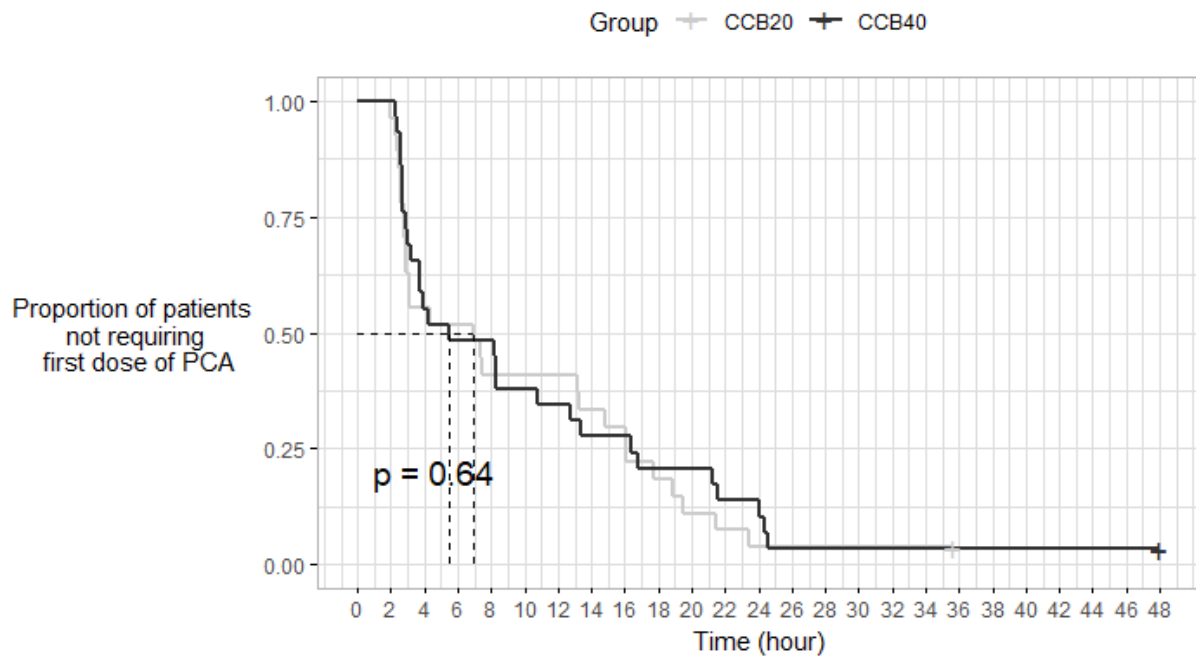


**Supplementary Fig. 4.** The proportion of patients not requiring the first dose of patient-controlled analgesia (PCA) stratified by group.



CCB20, costoclavicular block (CCB) with 20 mL of 0.75% ropivacaine; CCB40, CCB with 40 mL of 0.375% ropivacaine; PCA, patient-controlled analgesia.